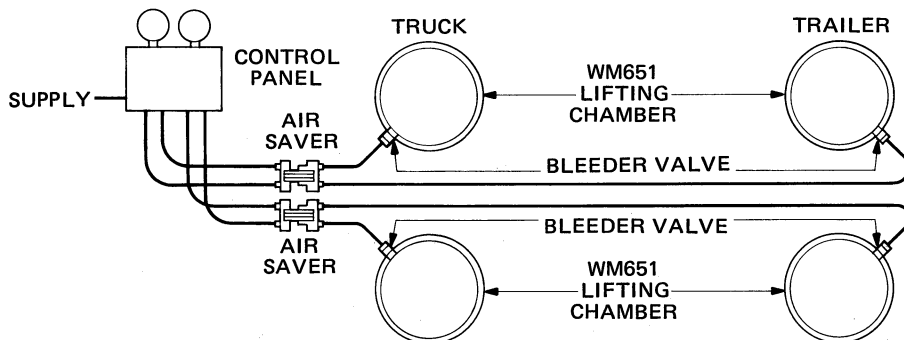
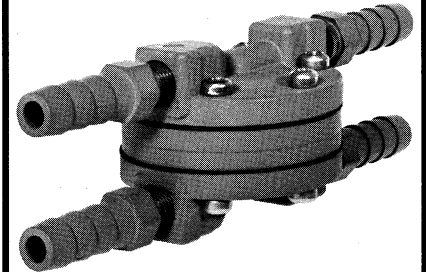
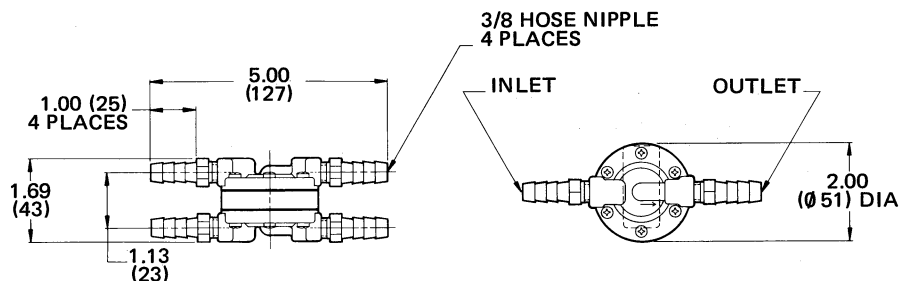
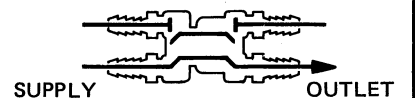
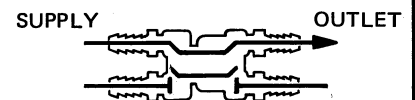
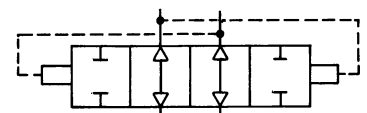


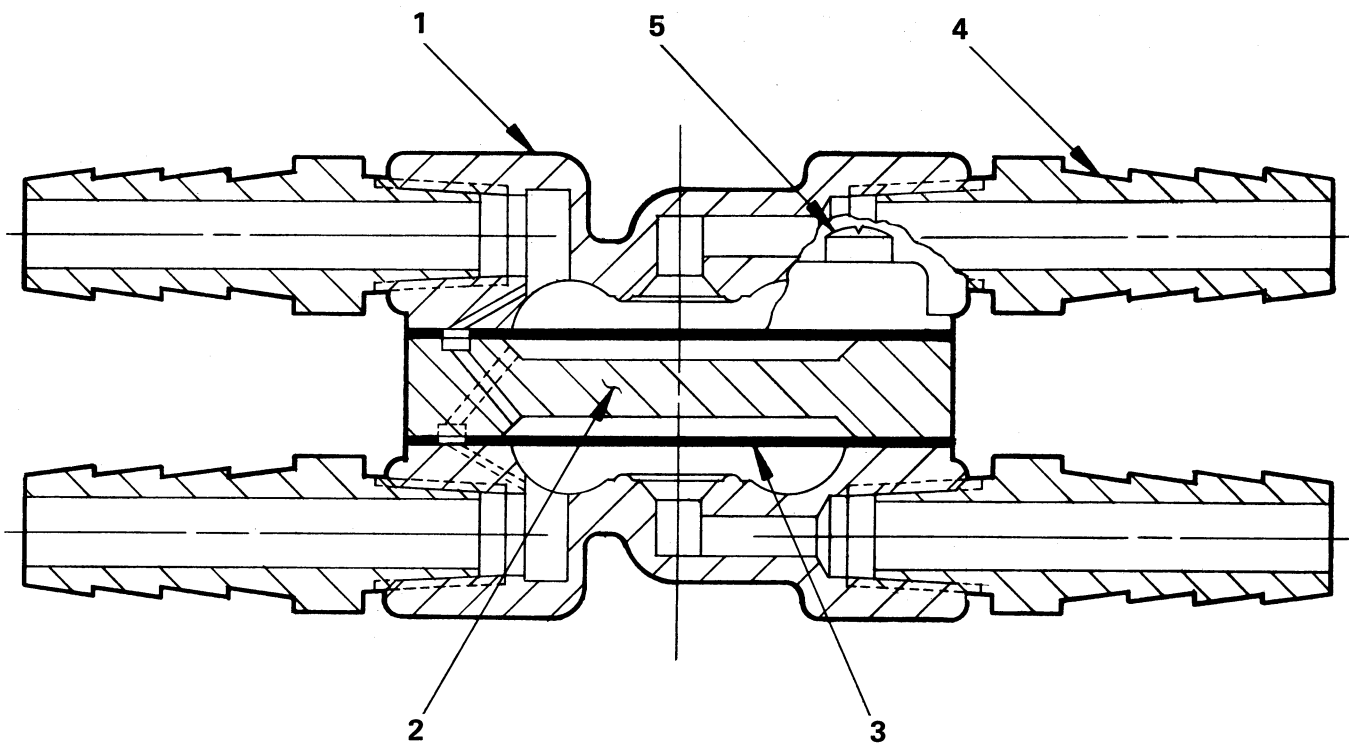
PRODUCT DESCRIPTION

DESCRIPTION The WM654A is an air saver valve engineered for use in conjunction with Williams air scales. Air savers maintain up to 80% of the air in one set of lifting chambers while the other set is being used. This allows multiple weight checks to be made without the necessity of repeatedly recharging the chambers.

OPERATION WM654A air savers are equipped with two internal diaphragms, two inlets and two outlets. The diaphragms function to direct air flow from a pressurized inlet to the corresponding outlet, and to prevent any other flow through the valve. This allows air to be held in a lifting chamber for subsequent weight checks while another chamber is being pressurized.

APPLICATION WM654A air saver valves are designed for use with vehicular air scales. One air saver is used for each set of lifting chambers and is installed between the air scale control panel and the first lifting chamber. WM654A valves are included with applicable Williams air scale kits.

TYPICAL APPLICATION

EXTERNAL CONFIGURATION

**AIR
SAVER
VALVE**
FUNCTIONAL DIAGRAM

I.S.O. SYMBOL




PARTS IDENTIFICATION		
ITEM	DESCRIPTION	QTY.
1	LOWER BODY	2
2	CENTER BODY	1
* 3	DIAPHRAGM	2
4	HOSE NIPPLE	4
5	SCREW	12

Service this unit with repair kit number 114516.
 *Asterisk designates items included in repair kit.

SPECIFICATIONS

PORT SIZE 3/8" Hose Fittings
 MAXIMUM OPERATING PRESSURE 150 PSI (1034,2 kPa)
 OPERATING TEMPERATURE* . . -20°F to 200°F (-28,9°C to 93,3°C)
 FLOW RATING 20 SCFM @ 100 PSI (0,5 m³/min @ 690 kPa)
 MOUNTING In-Line
 MOUNTING ATTITUDE Optional
 MATERIALS: Body Castings Die Cast Zinc Alloy
 Diaphragms Fabric-Reinforced Buna N
 NET WEIGHT 12 oz. (0,3 kg)
 *For continuous operation beyond this range, contact factory.

TO ORDER, SPECIFY
WM654A
 Model Number
 PART NUMBER 113981