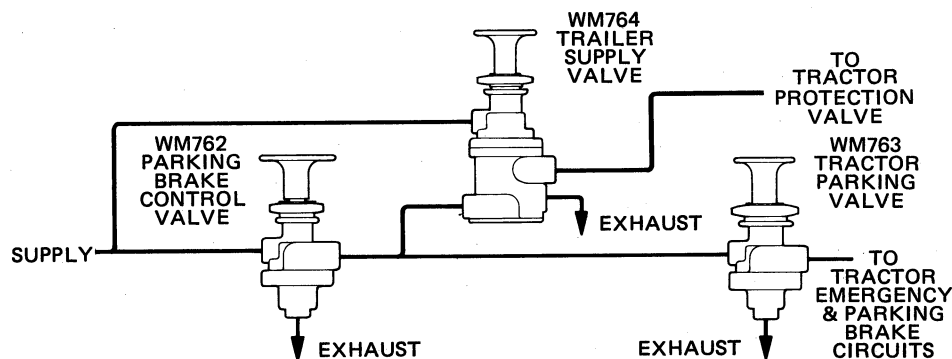
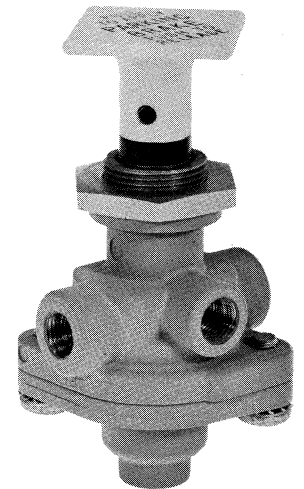
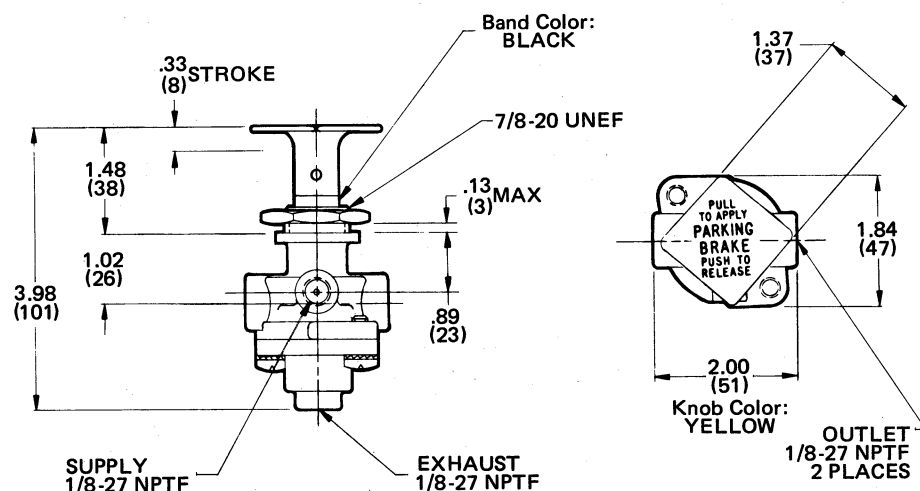
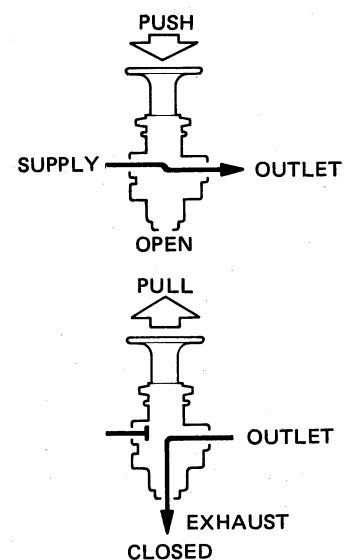
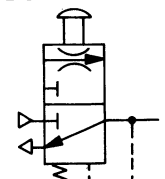


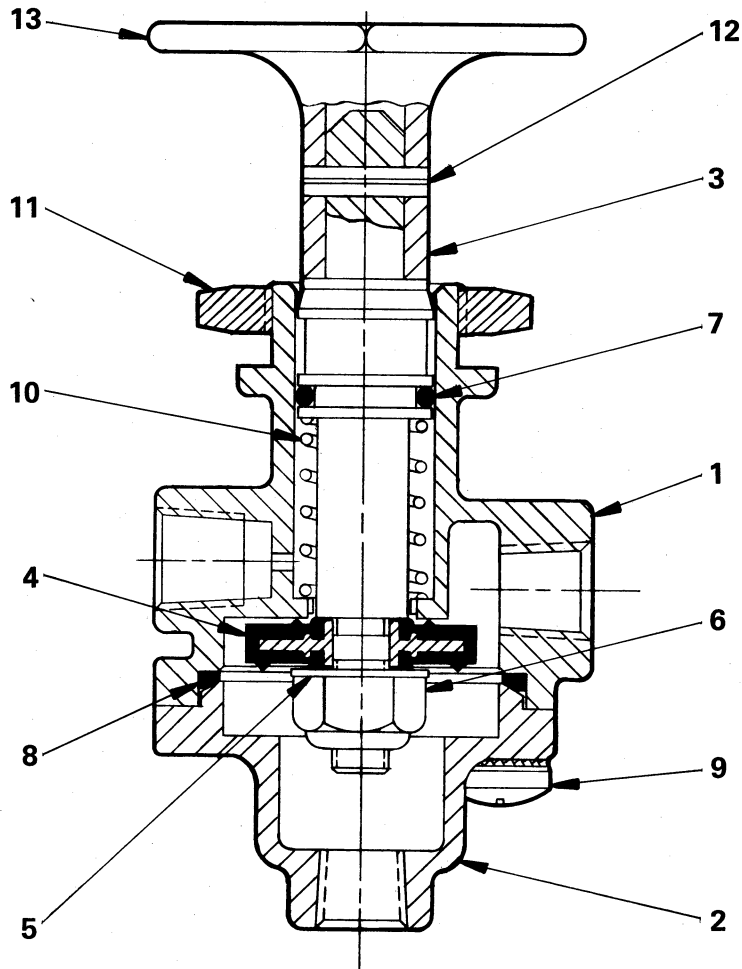
PRODUCT DESCRIPTION

DESCRIPTION The WM762 is a panel-mounted three-way control valve with push-to-open, pull-to-exhaust action. The valve may be opened or closed manually, but it will exhaust automatically if the supply pressure drops below the minimum holding pressure. A black band on the knob indicates whether valve is actuated.

OPERATION A normally closed, spring-returned valve, the WM762 requires a minimum supply pressure of 35-45 PSI (241,3-310,3 kPa) to remain in the open position after manual actuation. When the knob is pushed in, air flows from the supply port to the outlet port. When the knob is manually pulled out or the supply pressure drops below 35-45 PSI (241,3-310,3 kPa), the supply port closes, and any pressure at the outlet port is released through the exhaust port. Thus, when the supply pressure drops below the necessary level, the valve exhausts and the spring brakes are applied automatically.

APPLICATIONS The WM762 parking brake control valve is engineered for air brake systems of heavy duty truck and tractor-trailer combinations. The valve is used to control the parking and automatic emergency functions of the spring brakes. The WM762 control valve complies with FMVSS-121.

TYPICAL INSTALLATION

EXTERNAL CONFIGURATION

**THREE-WAY
CONTROL
VALVE**
FUNCTIONAL DIAGRAM

I.S.O. SYMBOL




PARTS IDENTIFICATION

ITEM	DESCRIPTION	QTY.	
		A1A	A2A
1	BODY	1	1
2	END CAP	1	1
3	STEM	1	1
* 4	POPPET	1	1
5	WASHER	1	1
* 6	LOCKNUT (114592)	1	1
* 7	O-RING	1	1
* 8	RECTANGULAR SEAL	1	1
9	SCREW	2	2
10	SPRING	1	1
11	NUT (117057)	1	1
12	SPRING PIN (117071)		1
13	BUTTON (117127)		1

Service this unit with repair kit number 117659.
 Replaceable items are followed by part numbers.
 *Asterisk designates parts included in repair kit 117659.

SPECIFICATIONS

PORT SIZE 1/8-27 NPTF
 MAXIMUM OPERATING PRESSURE 150 PSI (1034,2 kPa)
 OPERATING TEMPERATURE* . . . -20°F to 200°F (-28,9°C to 93,3°C)
 FLOW RATING 20 SCFM @ 100 PSI (0,6 m³/min @ 690 kPa)
 AUTO. APPLICATION PRES. Below 35-45 PSI (241,3-310,3 kPa)
 MOUNTING 0.88 in. (22 mm) Hole in Control Panel
 MOUNTING ATTITUDE Optional
 MATERIALS: Body Castings Die Cast Zinc Alloy
 Hardware Plated Steel
 Seals & O-Rings Buna N
 NET WEIGHT 9.5 oz. (0,3 kg)

*For continuous operation beyond this range, contact factory.

TO ORDER, SPECIFY

WM762 _____

Model Number Suffix

PART NUMBER _____

SELECT SUFFIX & PART NUMBER BELOW

SUFFIX	PART NUMBER	KNOB IDENTIFICATION
WM762 A1A	117451	Valve Furnished Without Knob
WM762 A2A	117069	Knob Lettered Per D.O.T. & R.C.C.C.