

Arens Controls Hydraulic Lever Control

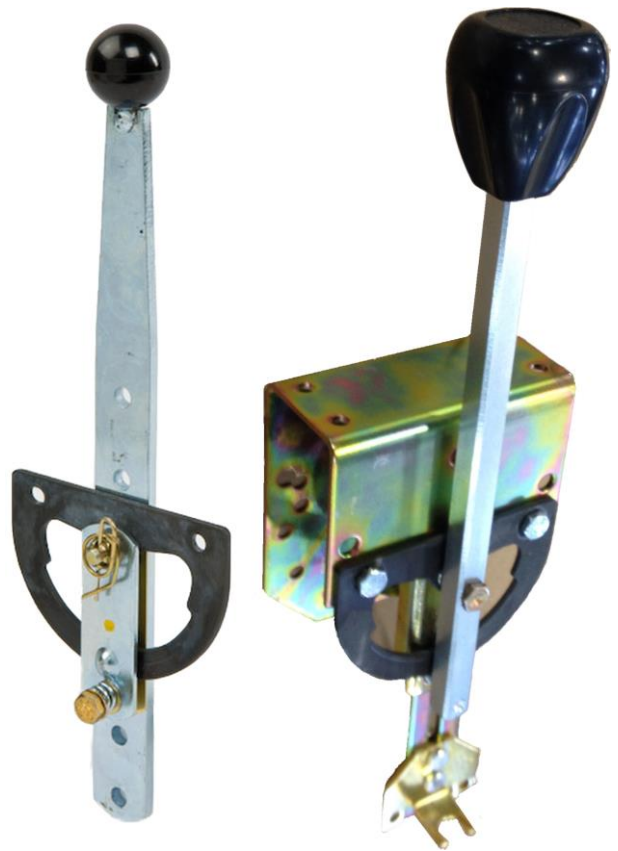
C7 Series (C72)

The C7 Series differs from conventional hydraulic levers in that the friction plate bears on a two-inch radius arc rather than merely squeezing a small washer pad at the pivot point. This friction plate allows the operator to move the lever to a desired point and let go of it and it will remain in place. While these control levers can resist operating loads on the output portion of the handle, the operator can effortlessly move the lever. An optional center detent is available which gives a sensory feedback to the operator when they return the lever to center or pass through the center point.

The C7 Series are ideal for hydraulic or hydrostatic systems that require simple lever actuation of a cable.

The C7 Series is available with two different types of lever arms and two different handle knobs. In addition, the C7 Series is available with or without a steel bezel (sometimes called a Gate-Plate) depending on the Vehicle OEM requirements. Curtiss-Wright can develop custom steel bezels with text or icons based on the Vehicle OEM specifications to help alert the driver to position and function.

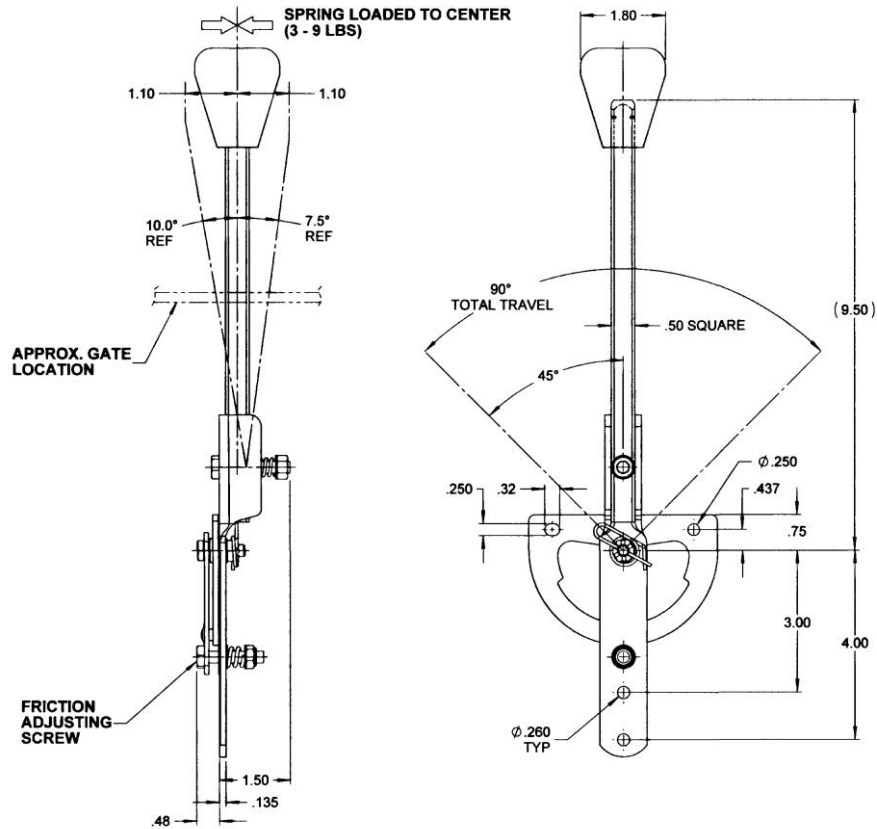
The lever arm has a 90° arc of travel, with 45° on each side of the center position. The lever arm can be shifted 7.5° to 10° left or right. This feature allows the Vehicle OEM to prevent the operator from freely moving from a reverse position to a forward position and usually requires a Z pattern in the Bezel or Gate Plate.



SPECIFICATIONS

INPUT MOTION	Symmetrical	±45° forward and back, 90° total
OUTPUT LOST MOTION	Preset at Factory	Less than 1°
OUTPUT STROKE	Push-Pull or Rod Linkage	Up to 4 inches (101mm)
FREE RUNNING TORQUE	Preset at Factory	10 to 35 inch-pounds
FRICITION HOLD	Preset at Factory	9 to 35 inch-pounds
DETENT BREAKOUT	Optional, preset at factory	10 to 50 inch-pounds
CONTROL HANDLE	Small Ball Knob Large Knob	Standard Optional
MECHANICAL	Max operating load on Output	Up to 200 inch-pounds

MECHANICAL DIMENSIONS – for spring loaded lever (mm)



MECHANICAL DIMENSIONS – for friction control assembly (mm)

