

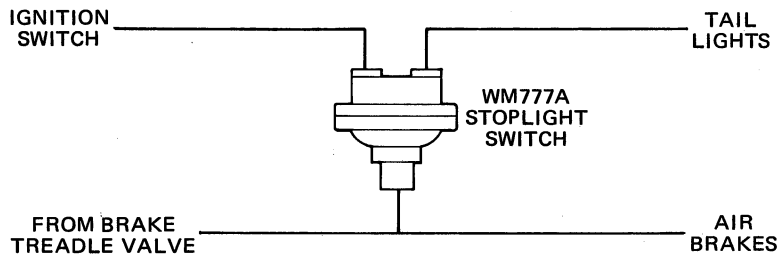
PRODUCT DESCRIPTION

DESCRIPTION Engineered for industrial or vehicle applications, the WM777A is a normally open, air pressure-actuated, electrical stoplight switch. The unit is mounted by the 1/4-18 NPTF male inlet port.

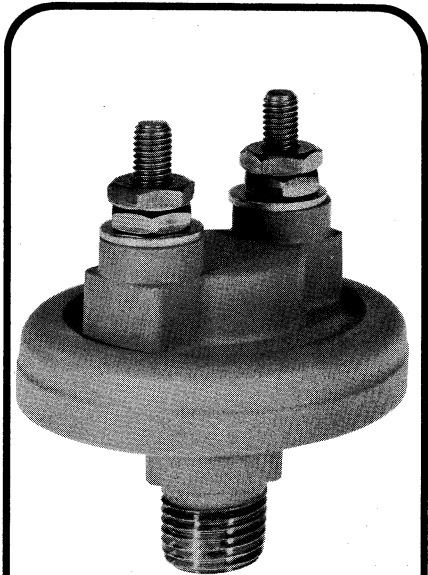
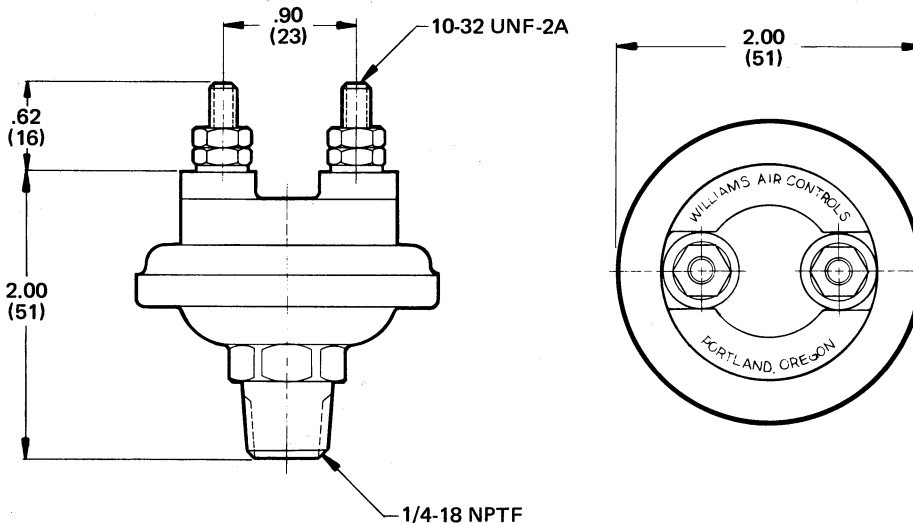
OPERATION An internal spring holds the contacts in the normal, open position. The WM777A stoplight switch is actuated by 2-6 PSI (13,8-41,4 kPa) of air pressure. When actuated, an internal diaphragm expands, closing the contacts.

APPLICATION Designed primarily for vehicular stoplight applications, the WM777A can be used in any air pressure-activated installation. A tee-fitting can be used to mount the switch to any air line. Wiring can be connected to either terminal. The WM777A stoplight switch can be used in FMVSS 121 applications.

TYPICAL INSTALLATION

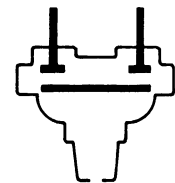


EXTERNAL CONFIGURATION

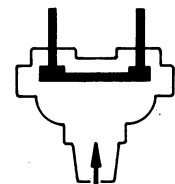


STOPLIGHT SWITCH

FUNCTIONAL DIAGRAM

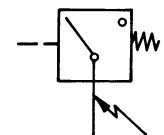


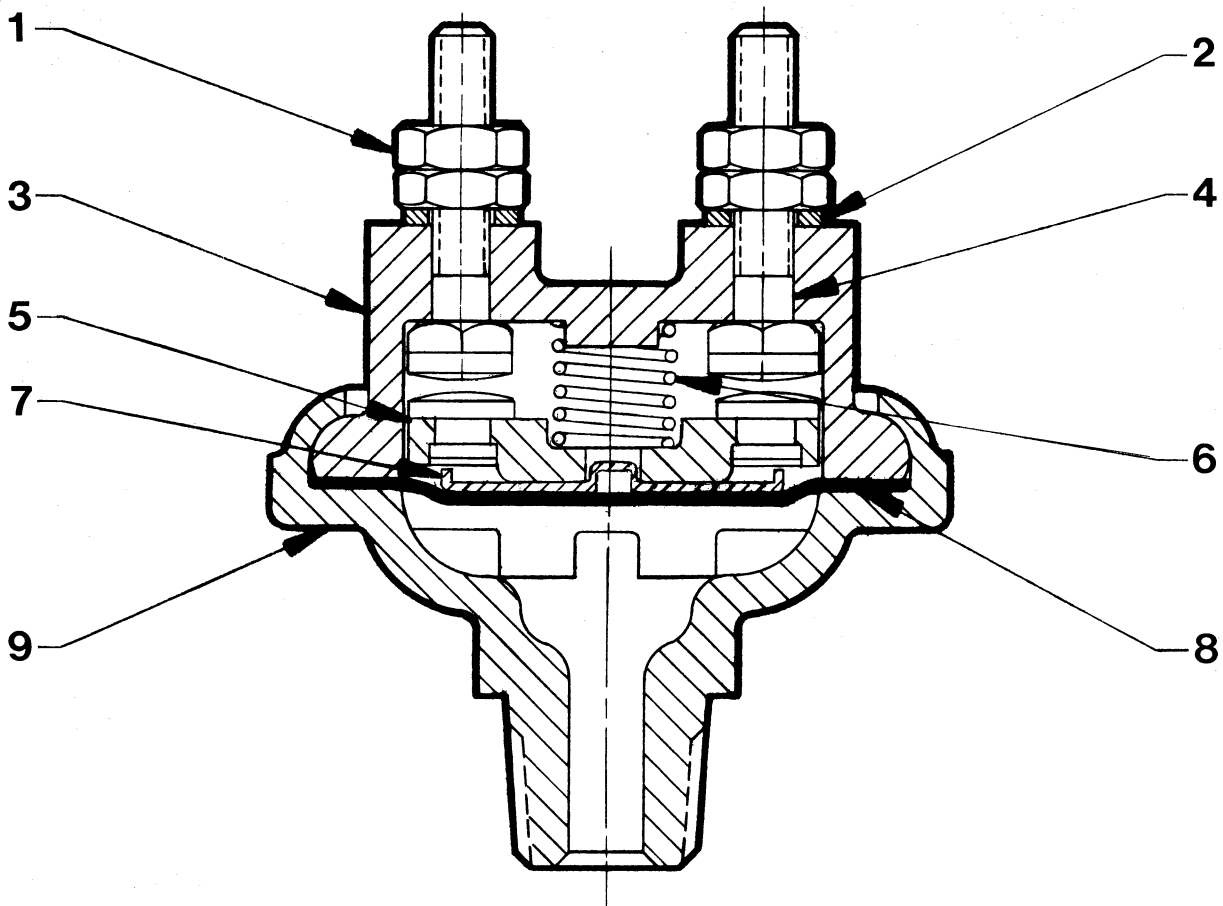
NORMAL



ACTUATED

I.S.O. SYMBOL





PARTS IDENTIFICATION		
ITEM	DESCRIPTION	QTY.
1	NUT	4
2	WASHER	2
3	BODY	1
4	TERMINAL	2
5	CONTACT	1
6	SPRING	1
7	DIAPHRAGM PLATE	1
8	DIAPHRAGM	1
9	COVER	1

This component is classified as a non-repairable item.

SPECIFICATIONS

PORT SIZE 1/4-18 NPTF
 MAXIMUM OPERATING PRESSURE. 150 PSI (1034,2 kPa)
 OPERATING TEMPERATURE. -40°F to 200°F (-40°C to 93,3°C)
 PRESSURE REQUIRED TO ACTUATE 2-6 PSI (13,8-41,4 kPa)
 CURRENT RATING See Graph of Current Rating vs. Usage
 MOUNTING Female Valve Port or Line Fitting
 MOUNTING ATTITUDE Optional
 MATERIALS: Body Glass-Filled Gray Noryl
 Cover Die Cast Zinc Alloy
 Terminals Brass
 Contacts Cadmium-Silver Alloy
 Contact Plate Die Cast Aluminum Alloy
 Diaphragm Fabric-Reinforced Buna N
 NET WEIGHT3 oz. (0,1 kg)

TO ORDER, SPECIFY
WM 777A
 Model Number
 PART NUMBER 118150

