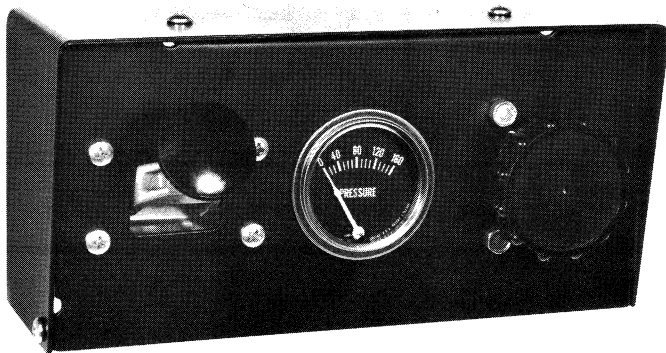
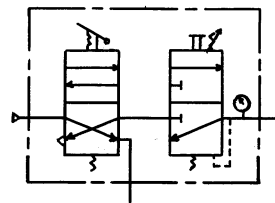


# WM517A LIFT AXLE CONTROL PANEL

0-85 PSI



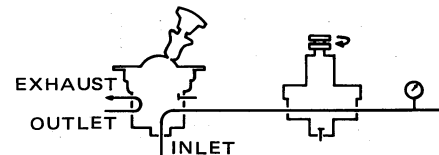
### I.S.O. SYMBOL



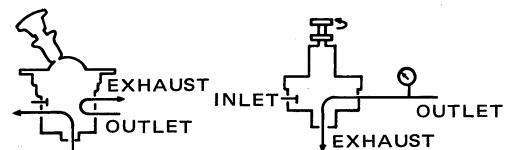
### DESCRIPTION

The WM517A panel is used to control pressurization of air springs on lift axles. The panel has two outlet ports. One delivers a regulated output and the other delivers full system pressure.

The WM517A incorporates a two position, four-way directional control valve, a three-way pressure regulator and a gage. When the directional control valve's lever is in the up position, the panel's outlet delivers full system pressure to lift the axle off the road. When the control lever is down, the panel delivers regulated pressure to control the axle weight distribution. Regulated output is indicated on the gage and is proportional to the position of the regulator's control knob.



REGULATED OUTPUT  
(AXLE DOWN)



FULL SYSTEM PRESSURE  
(AXLE UP)

### SPECIFICATIONS

PORT SIZES:	Inlet .....	1/8-27 NPTF
	Outlet .....	1/8-27 NPTF
MAXIMUM SUPPLY PRESSURE .....	150 PSI (1034,2 kPa)	
OPERATING TEMPERATURE* .....	-20°F to 200°F (-28,9°C to 93,3°C)	
FLOW RATING .....	15 SCFM @ 100 PSI (0,4 m <sup>3</sup> /min @ 690 kPa)	
GAGE RANGE .....	0-160 PSI	
ADJUSTABLE OUTPUT RANGE .....	0-85 PSI (0-672,2 kPa)	
MOUNTING .....	Panel Secured to Console or Bracket	
MOUNTING ATTITUDE .....	Optional	
MATERIALS:	Valve Bodies .....	Die Cast Zinc Alloy
	Panel .....	Steel
	Tubing .....	Nylon
	Knobs .....	Black Plastic
	Diaphragm .....	Buna N
	Seals .....	Buna N
WEIGHT .....	4 lbs., 9 oz. (2,1 kg)	

\*For continuous operation beyond this range, contact factory.