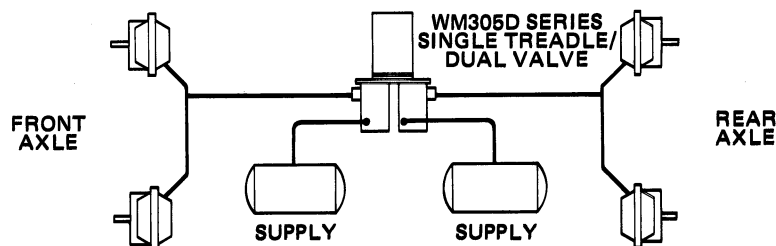
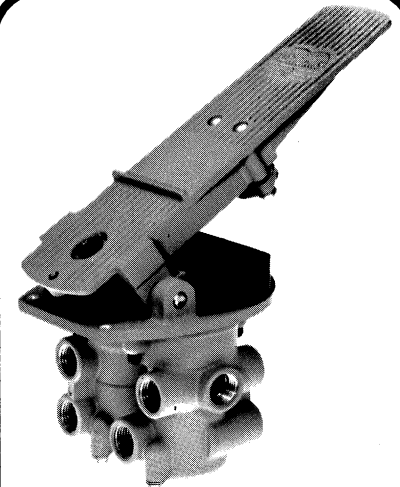
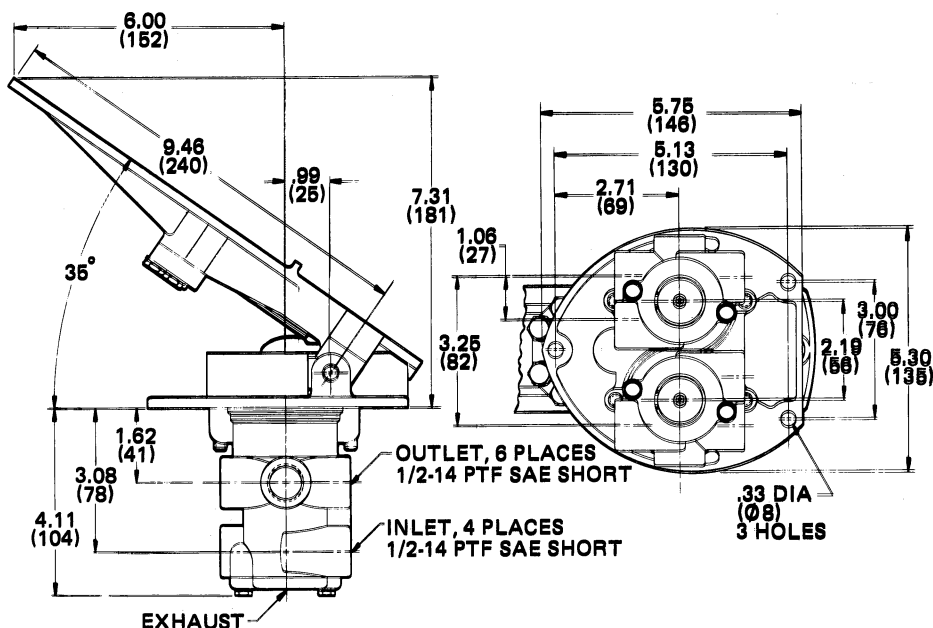
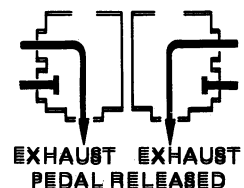
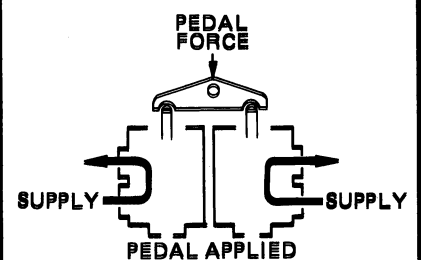
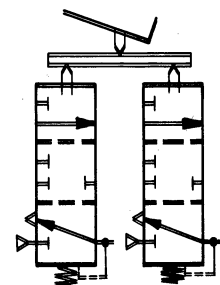


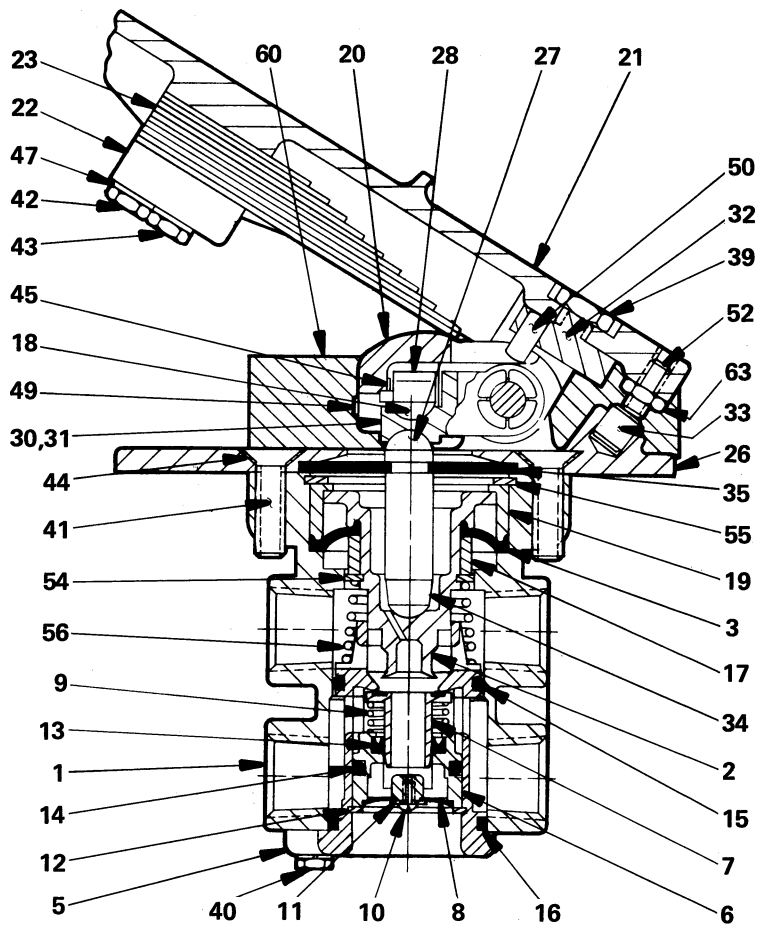
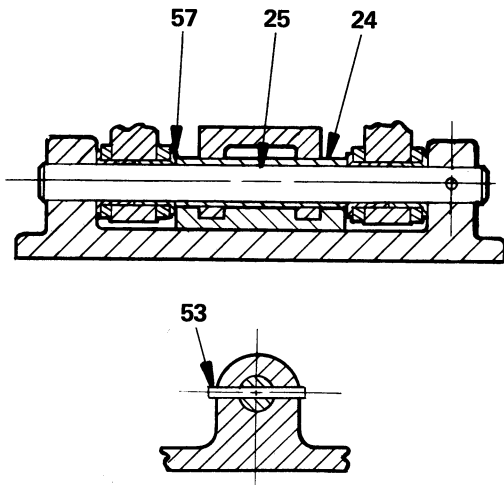
PRODUCT DESCRIPTION

DESCRIPTION The WM305D1 is a floor-mounted single treadle/dual valve that is engineered for split system brake applications. The treadle features an adjustment which permits proportional delivery between split braking systems. The WM305D1 is equipped with a debris displacer to prevent foreign material from entering the treadle mechanism and interfering with pedal movement.

OPERATION The WM305D1 valve incorporates two compensating pressure regulators that are mounted to a common plate. To assure split system protection, each regulator has independent supply and delivery ports. By adjusting the radius link on the treadle's walking beam, the delivery ratio between the two regulators can be modified for a specific application. The WM305D1 is shipped from the factory with this delivery ratio preset at 1 to 1.

APPLICATION Used in both on and off-highway applications, the WM305D1 valve is installed in split air brake systems that require proportional delivery. This single treadle/dual valve is recognized for its modulation characteristics and may be used in FMVSS-121 applications.

TYPICAL INSTALLATION

EXTERNAL CONFIGURATION

**SINGLE
TREADLE/
DUAL VALVE**
FUNCTIONAL DIAGRAM

I.S.O. SYMBOL




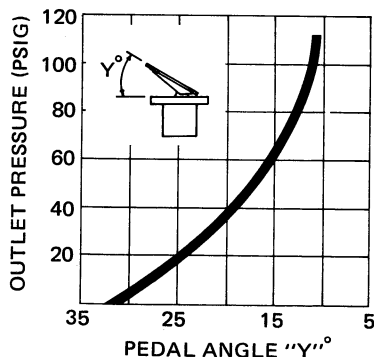
PARTS IDENTIFICATION

ITEM	DESCRIPTION	QTY.	ITEM	DESCRIPTION	QTY.
1	VALVE BODY	2	28	BEAM (101996)	1
2	PISTON	2	30	LEFT GUIDE	1
* 3	DIAPHRAGM	2	31	RIGHT GUIDE	1
5	CART. BODY	2	32	ADJ. CAM (102000)	1
6	GUIDE TUBE	2	33	STOP PIN (102001)	1
* 7	SEAT TUBE	2	34	STEM (102002)	2
* 8	EXHAUST DISC	2	* 35	COVER (102003)	1
9	SPRING	2	39	NUT	1
10	SCREW	2	40	SCREW	4
11	WASHER	2	41	SCREW (116804)	4
12	RETAINING RING	2	42	SCREW	2
* 13	U-CUP	2	43	SCREW	2
* 14	O-RING	2	44	WASHER (115082)	4
* 15	O-RING	2	* 45	WASHER (115088)	2
* 16	O-RING	2	47	WASHER	4
17	CLAMP RING	2	49	PIN (117917)	1
* 18	BEARING (101986)	2	50	DOWEL (115331)	1
19	CLAMP RING	2	52	SET SCREW	1
20	RADIUS LINK	1	* 53	ROLL PIN	2
21	TREADLE	1	54	RETAINING RING	2
22	SPRING CLAMP	1	55	RETAINING RING	2
23	SPR. PACK (117906)	1	56	SPRING	2
* 24	BUSHING	1	* 57	BUSHING (110370)	4
* 25	TREADLE PIN	1	* 60	DISPLACER (118262)	1
26	BRACKET	1	63	NUT	1
* 27	BEARING (101995)	2			

SPECIFICATIONS

PORT SIZE 1/2-14 NPTF
 MAXIMUM OPERATING PRESSURE 150 PSI (1034,2 kPa)
 OPERATING TEMPERATURE* . . -20°F to 200°F (-28,9°C to 93,3°C)
 FLOW RATING (per valve) . . 90 SCFM @ 100 PSI (2,6 m³/min @ 690 kPa)
 ADJUSTMENT RANGE From 2:1 to 1:1 to 1:2
 MOUNTING . . Through 5.00 in. (127 mm) Diameter Hole in Floorboards
 MOUNTING ATTITUDE Optional
 MATERIALS: Treadle & Bracket. Cast Aluminum Alloy
 Valve Castings Die Cast Aluminum & Zinc Alloys
 Radius Link Ductile Iron (Hardened)
 Walking Beam Investment Cast Steel Alloy
 Diaphragm Fabric-Reinforced Buna N
 Dust Seals Chloroprene Rubber
 Debris Displacer. Polynorborene Rubber
 O-Ring & U-Cup Seals Buna N
 NET WEIGHT. 6.50 lb. (3,0 kg)
 *For continuous operation beyond this range, contact factory.

Service this unit with repair kit number 118147. This repair kit includes parts to service both WM352F valves (Items 1-17,19,40,54-56). To service only a WM352F valve, order repair kit number 114299. To replace each WM352F valve, order part number 117983. To replace only the cartridge assembly (Items 5-16) in each WM352F valve, order part number 101979. Other replaceable items are followed by part numbers.
 *Asterisk designates items included in repair kit 118147.



TO ORDER, SPECIFY
WM305D1
 Model Number
PART NUMBER 118266