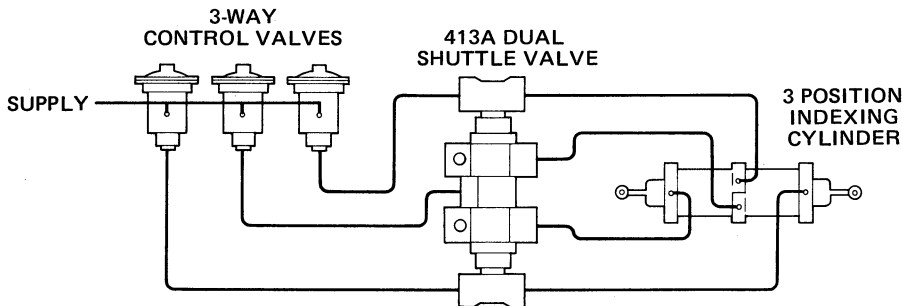
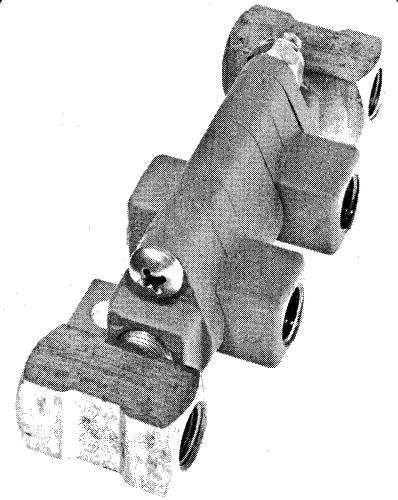
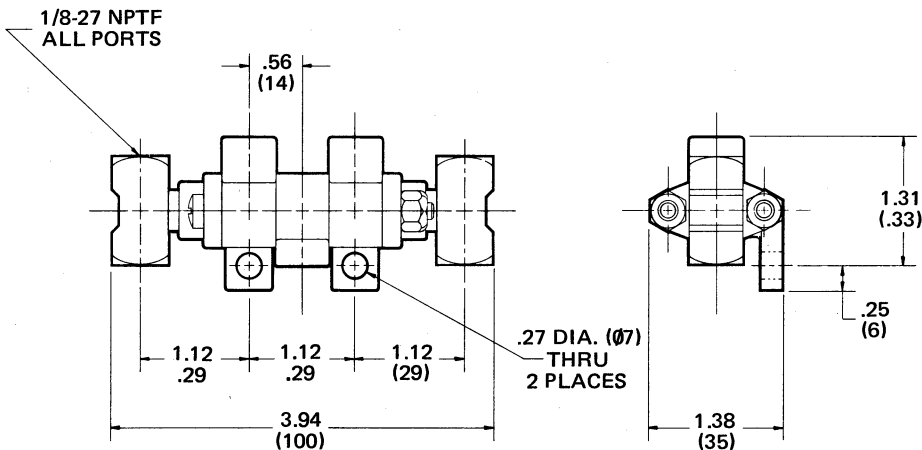
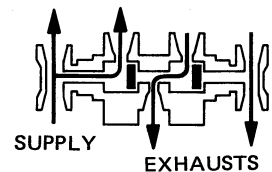
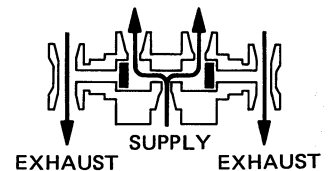
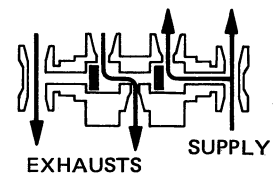
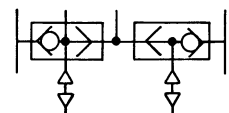


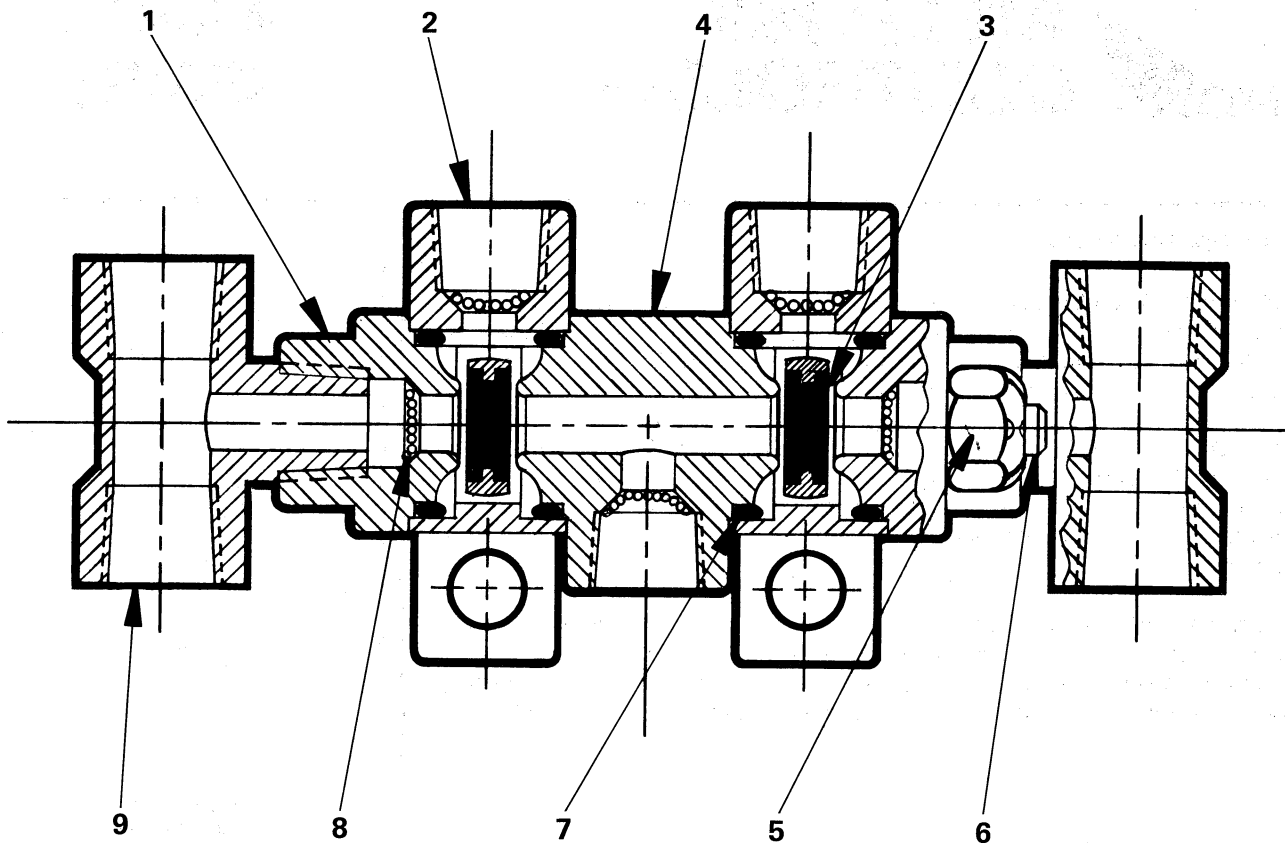
PRODUCT DESCRIPTION

DESCRIPTION The WM413A is a bracket-mounted dual shuttle valve engineered for industrial and vehicular applications which operate with a low air flow rate. WM413A valves are composed of two WM412A valves mounted on a common body with a tee on either end, giving them a total of seven ports.

OPERATION The WM413A shuttle valve is equipped with three inlet ports and four outlets. A pressure signal introduced at one of the inlets will cause air to flow to two specific outlet ports, as illustrated in the functional diagram. Air pressure is prevented from flowing from one inlet port to another by two elastomer shuttles within the valve.

APPLICATION WM413A shuttle valves are designed for use in the control systems of indexing cylinders. The valve allows two cylinder ports to be simultaneously pressurized by a single air signal, greatly reducing the complexity of the indexing cylinder's control circuit and the number of lines required to the control valve.

TYPICAL INSTALLATION

EXTERNAL CONFIGURATION

**DUAL
SHUTTLE
VALVE**
FUNCTIONAL DIAGRAM

I. S. O. SYMBOL




PARTS IDENTIFICATION		
ITEM	DESCRIPTION	QTY.
1	END CAP	2
2	BRACKET BODY	2
* 3	POPPET	2
4	CENTER BODY	1
5	NUT	2
6	SCREW	2
* 7	O-RING	4
8	SCREEN	5
9	PIPE TEE	2

Service this unit with repair kit number 114353.
 *Asterisk designates items included in repair kit.

SPECIFICATIONS

PORT SIZE 1/8-27 NPTF
 MAXIMUM OPERATING PRESSURE. 150 PSI (1034, 2 kPa)
 FLOW RATING. 35 scfm @ 100 PSI (0,9 m³ min @ 690 kPa)
 OPERATING TEMPERATURE* . . -20°F to 200°F (-28, 9°C to 93, 3°C)
 MOUNTING. Integral Bracket
 MOUNTING ATTITUDE Optional
 MATERIALS: Body Castings Die Cast Zinc Alloy
 Shuttles Buna N
 O-rings Buna N
 NET WEIGHT. 9 ounces (0,3kg)
 *For continuous operation beyond this range, contact factory.

TO ORDER, SPECIFY
WM413A
 Model Number
PART NUMBER 112848