

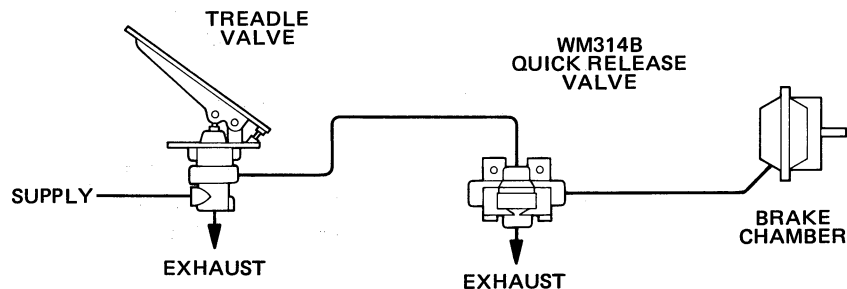
PRODUCT DESCRIPTION

DESCRIPTION In vehicular applications, the WM314B is used to release pressure from the brake chambers to the atmosphere. Because the WM314B features diaphragm construction, pressure is quickly exhausted through the WM314B rather than through the treadle valve. The WM314B is a self-relieving, three-way, normally closed valve that is suitable for single axle applications. This quick release valve has a supply-to-outlet flow rate of 163 SCFM (4,6 m³/min) with a 100 PSI (689,5 kPa) supply.

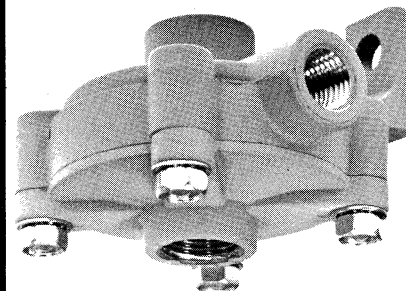
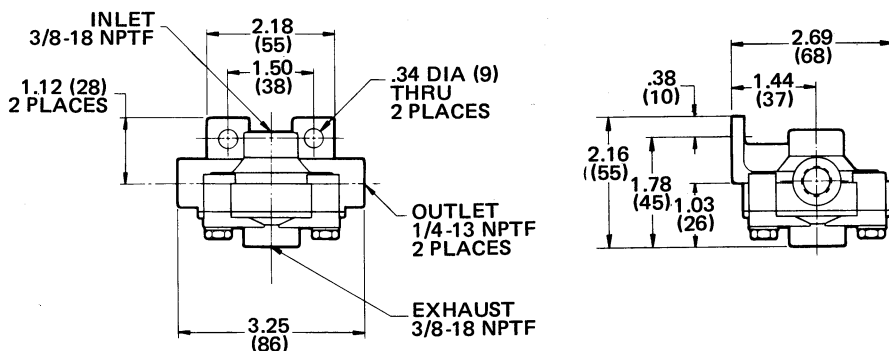
OPERATION Supply pressure acts against the diaphragm, which flexes to permit pressure delivery. The valve's output is approximately the same as the supply pressure applied. If the supply pressure decreases, the valve compensates and exhausts outlet pressure until the outlet pressure balances with the supply pressure.

APPLICATION As shown in the installation schematic, the WM314B is used to direct pressure between the treadle and the brake chambers. The valve is equipped with two outlet ports for single axle installations. The unit can be easily repaired without removal from the vehicle.

TYPICAL INSTALLATION

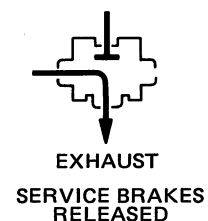
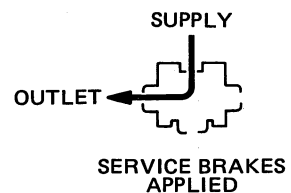


EXTERNAL CONFIGURATION

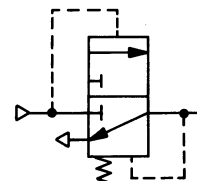


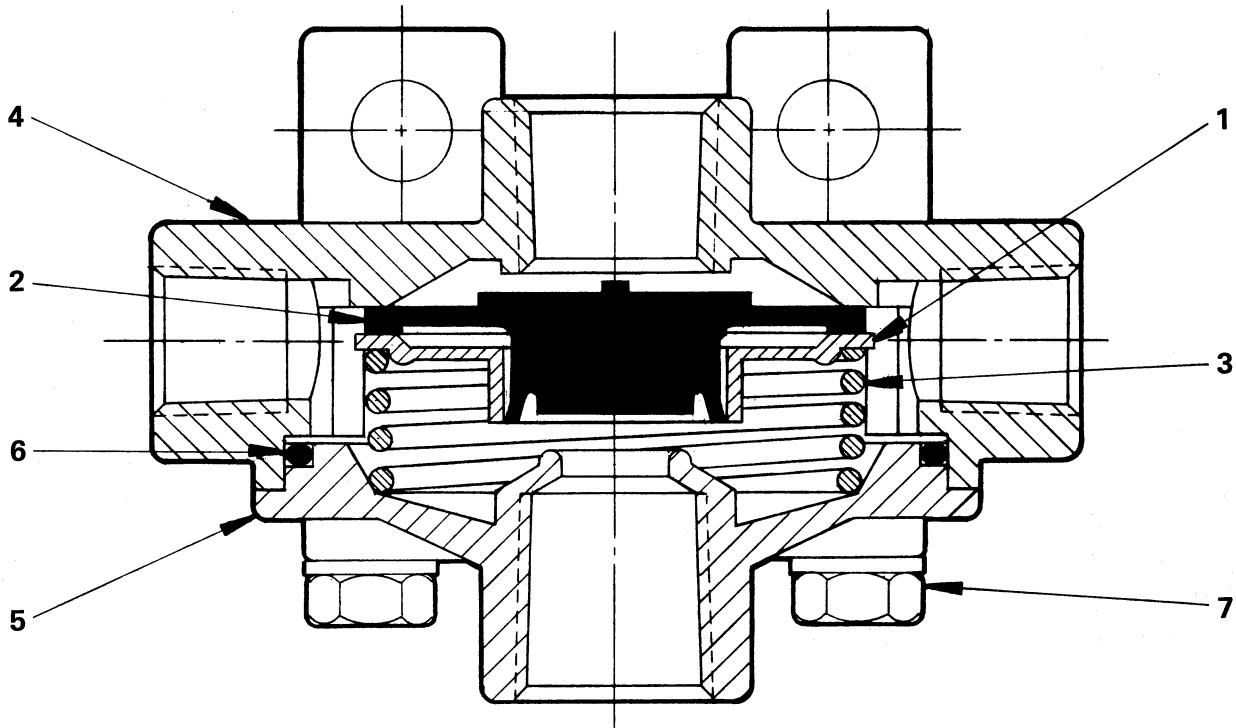
QUICK RELEASE VALVE

FUNCTIONAL DIAGRAM



I. S. O. SYMBOL





PARTS IDENTIFICATION		
ITEM	DESCRIPTION	QTY.
1	DIAPHRAGM PLATE	1
* 2	DIAPHRAGM	1
3	SPRING	1
4	BRACKET BODY	1
5	COVER	1
* 6	O-RING	1
7	SCREW	4

Service this unit with repair kit number 114258.
 *Asterisk designates parts included in repair kit number 114258.

SPECIFICATIONS

PORT SIZES: Inlet & Exhaust 3/8-18 NPTF
 Outlet 1/4-18 NPTF
 MAXIMUM OPERATING PRESSURE 150 PSI (1034,2 kPa)
 OPERATING TEMPERATURE* . . . -20°F to 200°F (-28,9°C to 93,3°C)
 FLOW RATING:
 Supply-to-Outlet . . . 163 SCFM @ 100 PSI (4,6 m³/min @ 690 kPa)
 Outlet-to-Exhaust . . . 150 SCFM @ 100 PSI (4,2 m³/min @ 690 kPa)
 MOUNTING With Integral Bracket and Two 5/16" Fasteners
 MOUNTING ATTITUDE Optional
 MATERIALS: Body Castings Die Cast Zinc Alloy
 Diaphragm & O-Ring Buna N
 NET WEIGHT 13 oz. (0,4 kg)
 *For continuous operation beyond this range, contact factory.

TO ORDER, SPECIFY
WM314B
 Model Number
 PART NUMBER 112173