

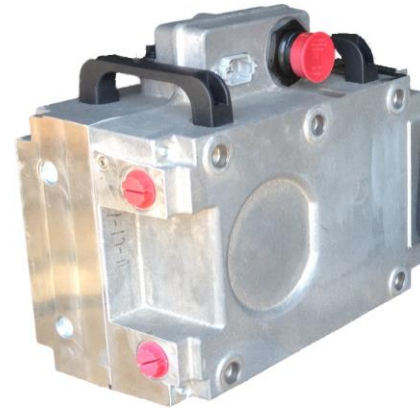
# Arens Controls DC-AC Converter POWERPAC™ Series

The POWERPAC DC-AC Inverter simplifies hybrid and electric vehicle design by inverting high-voltage power from the hybrid battery to 115VAC for export power, jobsite tools and other ancillary devices. Hand tools and other common 115VAC powered tools that normally require an auxiliary generator can be easily powered with this rugged DC-AC Inverter.

The DC-AC Inverter is built on a Liquid-Cooled Chassis and is rated to 6kW of continuous power.

The DC-AC Inverter delivers the industry's highest power density, highest surge capacity and highest continuous operating temperature rating. The chassis is sealed to IP67 / 6K9K and fits in a Group 31 size battery compartment.

The rugged components are equipped with CAN J1939 Communication capability, self-diagnostic software and intelligent thermal protection.



The POWERPAC series is purpose-built for on-highway and off-highway applications. The POWERPAC Hybrid Vehicle Component Series have over 500 million vehicle miles of on-road service in punishing municipal bus and service truck applications, delivering proven technology in the field and on the road.

## SPECIFICATIONS

### ELECTRONICS

#### DOWN CONVERT

DC Input Voltage	300V minimum 360V nominal 440V maximum
AC Output Voltage	115Vrms nominal
DC Input Draw	23A continuous 49A peak
AC Output Current, RMS	52A continuous steady state 65A overload

### OUTPUT WAVEFORM

True Sine Wave	5% THD nominal
----------------	----------------

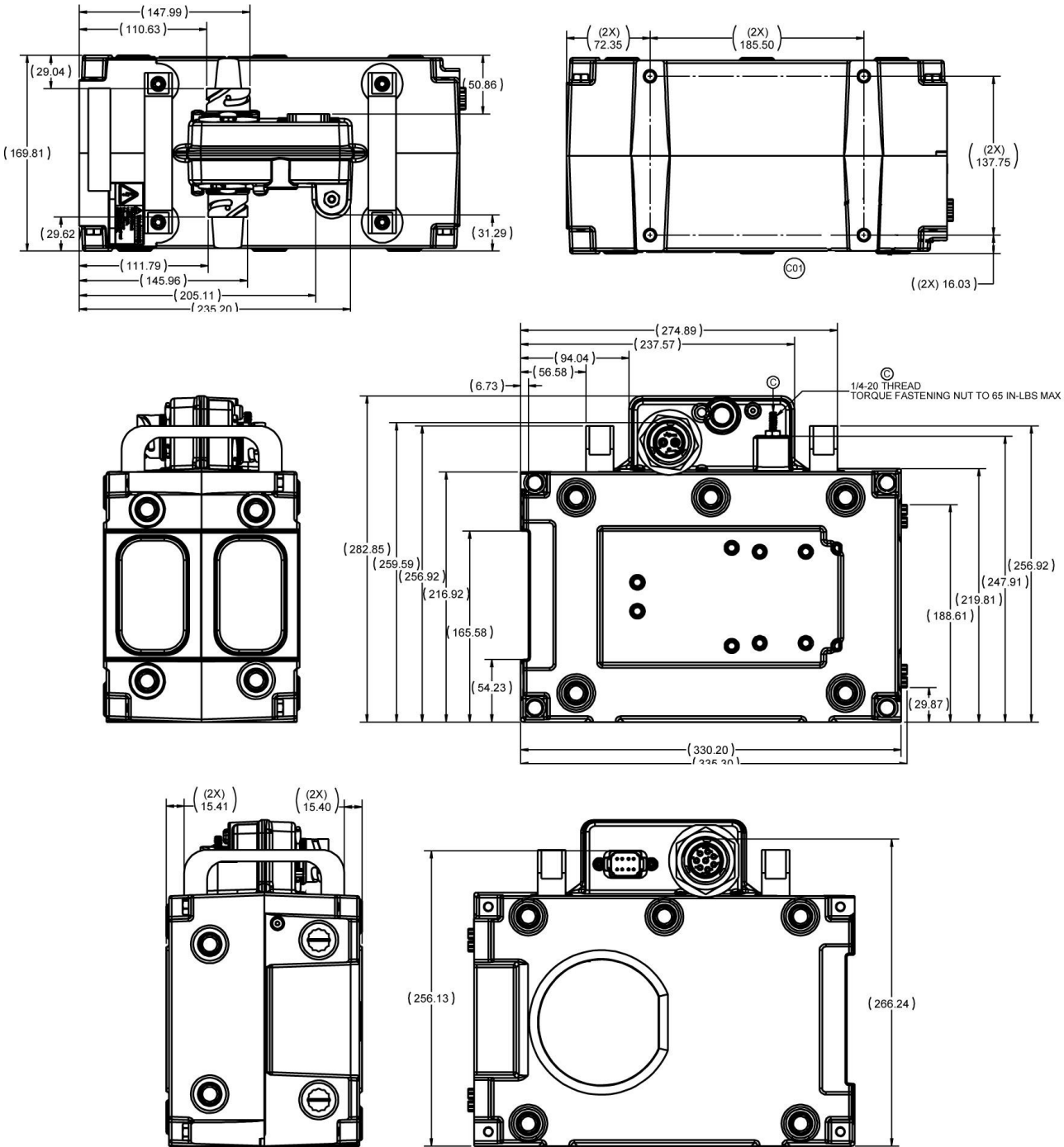
### MECHANICAL

Weight	46 lbs.
--------	---------

### ENVIRONMENTAL

Operating Temperature	-40 to 65°C
Storage Temperature	-50 to 105°C
Sealing	IP67 / IP6K9K
Isolation	2000Vdc isolation from the 360Vdc side to the 115Vac or the chassis

**AIR COOLED CHASSIS MECHANICAL DIMENSIONS (mm)**



© 2014 Curtiss-Wright. All rights reserved. Specifications are subject to change without notice.  
All trademarks are property of their respective owners.

DCAC-11/17

**CURTISS-  
WRIGHT**

**USA** Arlington Heights  
Illinois  
T: +1.847.844.4700  
  
cwig.us@curtisswright.com  
www.cw-industrialgroup.com

**Europe** Garching  
Germany  
T: +49.89.5404100.0  
  
cwig.de@curtisswright.com  
www.cw-industrialgroup.com

**Asia** Shanghai  
China  
T: +86.213.3310670  
  
cwig.cn@curtisswright.com  
www.cw-industrialgroup.com