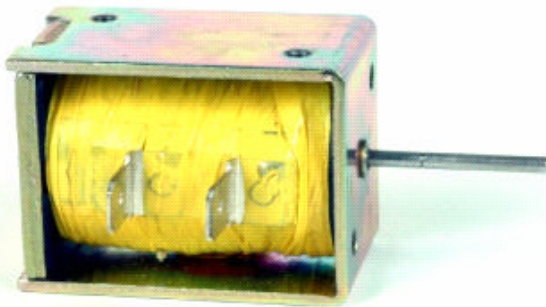


# D-Frame Solenoid

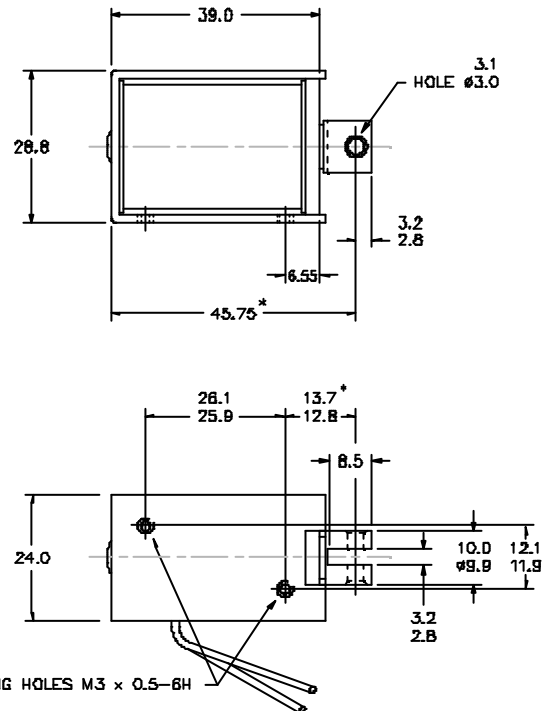
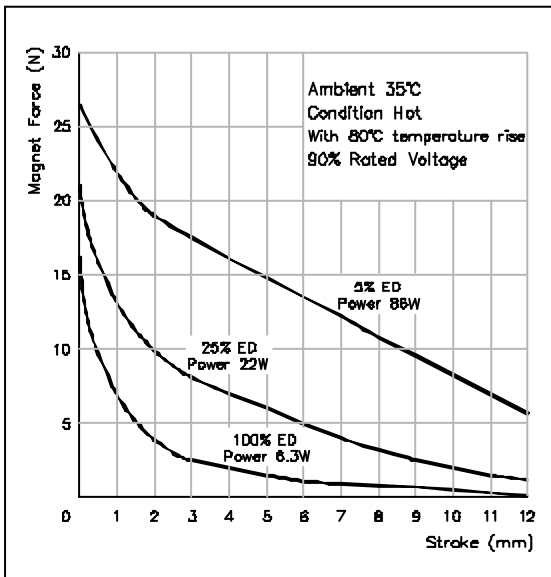
MD1039



- Optional Thrust or Pull Type
- Customised Plunger Ends
- Flying Leads or Tags
- Optional Voltage Ratings
- Optional Connectors
- Customised Fixing Holes
- Optional Return Spring
- Alternative Plating Finishes
- Optional Anti-Impact Washer
- Optional Threaded End Stop

If plunger works with gravity:  
stroke force = magnet force + plunger weight force.

If plunger works against gravity:  
stroke force = magnet force - plunger weight force.



\* DIMENSIONS WITH SOLENOID ENERGISED. TOLERANCES (UNLESS STATED)  $\pm 0.4\text{mm}$ .