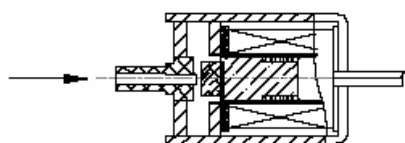


# Solenoid Valve

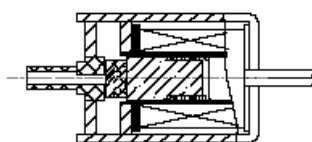
GV0625



- 2 way air valve
- Optional voltage ratings
- Flying leads with optional connectors
- Customised fixing holes
- Alternative plating finishes
- Orifice  $\varnothing$  1.4mm

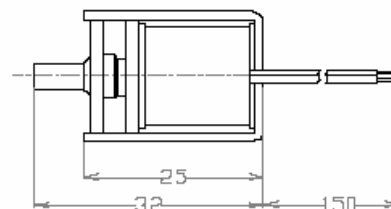
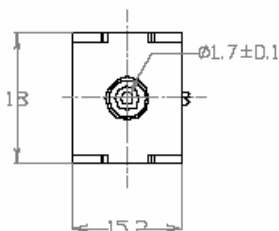
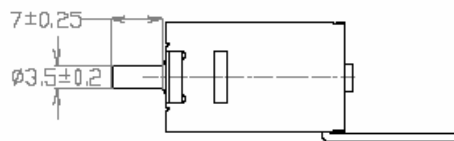


POWER ON: VALVE OPEN



POWER OFF: VALVE CLOSE

Unit: mm



Total weight : 33g  
Plunger weight : 2g

## STANDARD SPECIFICATION

| 1 | RATED POWER CONSUMPTION | 2.1W (at 20°C)                             | 8 | COIL SPECIFICATIONS |                |              |
|---|-------------------------|--|---|---------------------|----------------|--------------|
|   |                         |  |   | VOLTAGE (VDC)       | RESISTANCE (Ω) | CURRENT (mA) |
| 2 | FLUID TO USE            | AIR  |   |                     |                |              |
| 3 | INSULATION GRADE        | CLASS A (<math>105^{\circ}\text{C}</math>) |   | 6                   | 17.14          | 350          |
| 4 | INTERNAL LEAKAGE        | 5PSIMAX (<math>-5\text{PSI}</math>)        |   | 12                  | 68.57          | 175          |
| 5 | STROKE                  | 0.2MM                                      |   | 24                  | 274.28         | 87           |
| 6 | NORMALLY                | 2-WAY VALVE                                |   |                     |                |              |
| 7 | ORIFICE INSIDE DIAMETER | $\varnothing$ 1.4MM                        |   |                     |                |              |