

Arens Controls Transmission Shifter

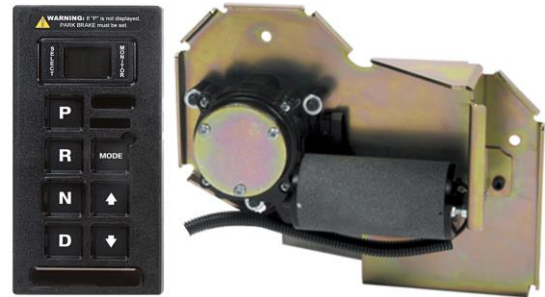
Shift By Wire Systems

The Shift By Wire (SBW) System converts Mechanically Actuated Automatic Transmissions into Electronically Shifted Transmissions. Vehicle OEMs can easily integrate this space-saving system into their chassis with minimal wiring required.

Shift By Wire allows Vehicle OEMs to integrate more than just transmission shifting into a single controller. Six Input and Two Output connections give Vehicle OEMs unprecedented control over auxiliary systems while improving operator efficiency.

Shift By Wire Actuators are designed to work effortlessly with Allison® 1000/2000/2400 Transmissions and are adaptable to Ford® Torqshift® and GM® 6L Series Transmissions. SBW Actuators can be directly installed horizontally or vertically on the Transmission or remotely if required.

CAN J1939 Communications are standard on the Shift By Wire System, streamlining integration into the vehicle architecture.



Up to seven buttons are available on the Shift By Wire Controller, giving vehicle OEMs a wide range of control over Transmission or ancillary functions. The MODE Buttons gives direct control over critical functions including a Power Take Off from the truck engine.

The Shift By Wire (SBW) system provides Vehicle OEMs with a reliable platform for effortless shifting, integrated safety feature, integration with custom vehicle features, reduced space claim and improved operator productivity.

SPECIFICATIONS

ELECTRICAL

SUPPLY VOLTAGE & DISPLAY LED	12Vdc or 24Vdc
ACTUATOR MOTOR CONTROLLERS	Governed by the SBW Controller
CONNECTORS	Packard, see next page
LED INDICATOR	Dual LED dimmable display
CAN COMMUNICATION	J1939
OEM DEFINED INPUTS & OUTPUTS	6 Inputs, 2 Outputs

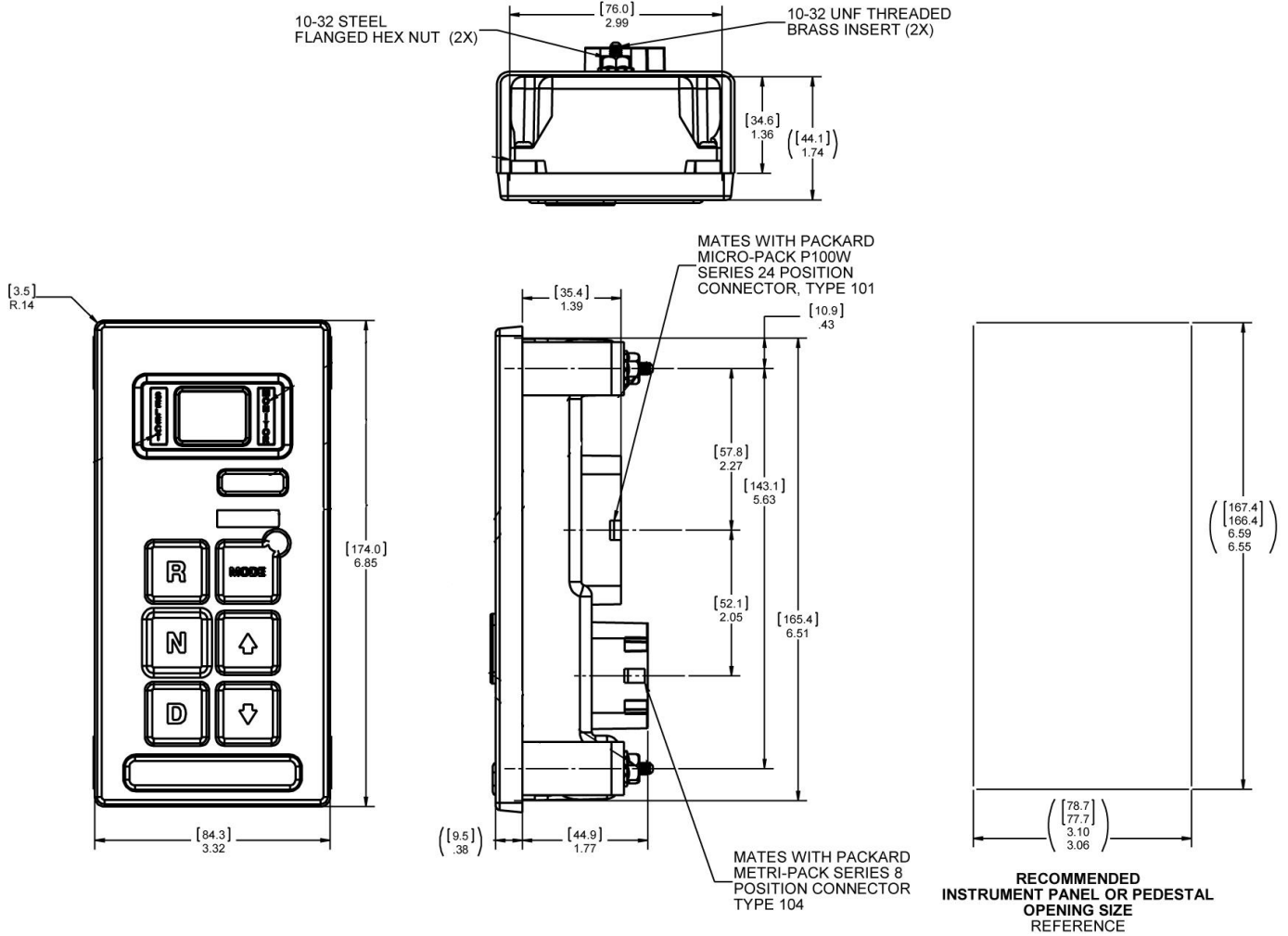
MECHANICAL

ACTUATOR INSTALLATION	Vertical, Horizontal or Remote
-----------------------	--------------------------------

ENVIRONMENTAL

CONTROLLER PROTECTION RATING	IP67 above panel
OPERATING TEMPERATURE	-40 to +85°C
STORAGE TEMPERATURE	-50 to +85°C

MECHANICAL DIMENSIONS (mm)



USA

Arlington Heights
Illinois
T: +1.847.844.4700

cwig.us@curtisswright.com
www.cw-industrialgroup.com

Europe

Garching
Germany
T: +49.89.5404100.0

cwig.de@curtisswright.com
www.cw-industrialgroup.com

Asia

Shanghai
China
T: +86.213.3310670

cwig.cn@curtisswright.com
www.cw-industrialgroup.com